

Ancor Pro[®]

Temporary Orthodontic
Anchorage System

TECHNICAL GUIDE



The *Ancor Pro* Orthodontic Anchorage System by *Ortho Organizers*[®] allows you to have greater control of patient treatment outcomes by providing increased stabilization compared to traditional stabilization techniques.

This technical guide will assist you in the placement and technique of inserting and seating of the *Ancor Pro* Temporary Orthodontic Anchor.

Indications

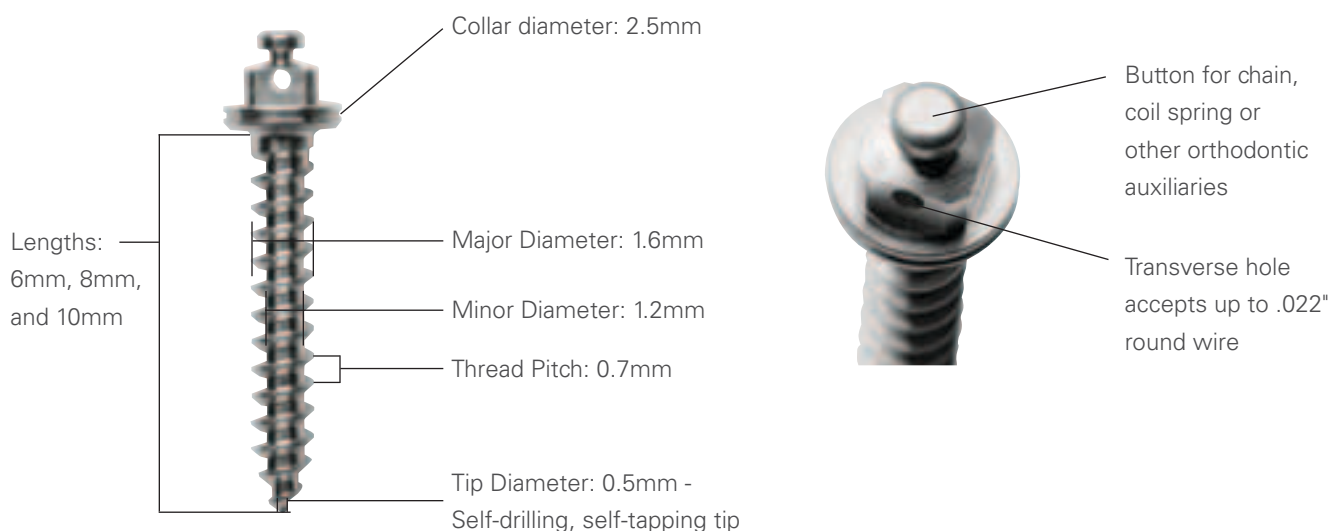
The *Ortho Organizers Ancor Pro* Temporary Orthodontic Anchor is intended to provide a fixed anchorage point for attachment of orthodontic appliances to facilitate the orthodontic movement of teeth.* *Ancor Pro* Anchors can be loaded immediately after placement. They can remain in place for the course of orthodontic treatment (up to 24 months).

Contraindications

Patients with one or more of the following are not candidates for the *Ancor Pro* Temporary Orthodontic Anchor:

- Active, intraoral infection
- Inadequate bone quantity or quality
- History of metal sensitivities
- History of metabolic disorders
- Active periodontitis
- Radiation therapy regimen

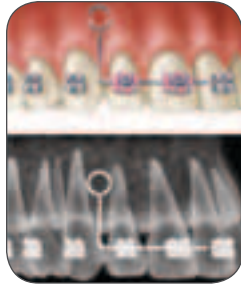
Ancor Pro Anchor Diagram



*For side effects, warnings and further information, please refer to the Instruction for Use.

Step 1 - Determining the Insertion Site

- The insertion site is determined during treatment planning using radiographs, models and clinical findings.
- The insertion site can be easily and accurately marked using the *Ancor Pro* X-Ray Placement Guide.



Step 2 - Anesthetic

- A local or topical anesthetic should be administered to the insertion site.



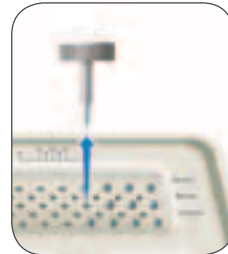
Step 3 - Pilot Drilling (Optional)

- The *Ancor Pro* Drill is used for drilling. The bone is pre-drilled at 800 rpm (max. 1500 rpm) using adequate cooling with a physiological saline solution (5°C) to avoid thermal damage to the bone.



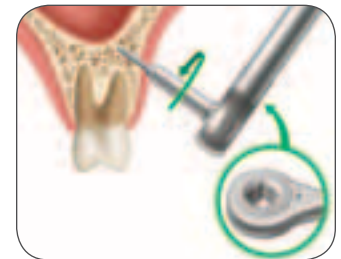
Step 4 - Removing the Anchor

- Connect the *Ancor Pro* Driver to the Ratchet, Thumbwheel or Screwdriver.
- Remove the *Ancor Pro* Anchor from the surgical tray using the Driver assembly.



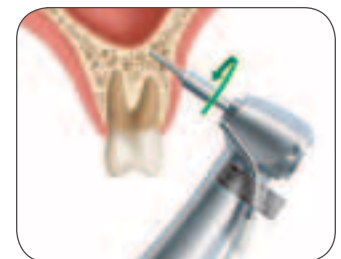
Step 5a - Manual Insertion

- Insert the *Ancor Pro* Anchor into its final position into the bone.



Step 5b - Mechanical Insertion

- Use the Latchlock Driver and a torque control hand piece (torque 20 ncm and 10-20 rpm) to insert the *Ancor Pro* Anchor to its final position into the bone.

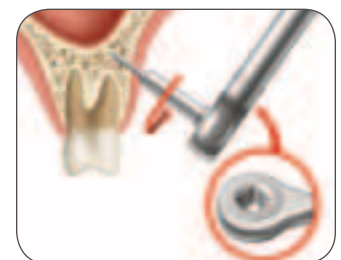


Step 6 - Connecting to the Orthodontic Appliance

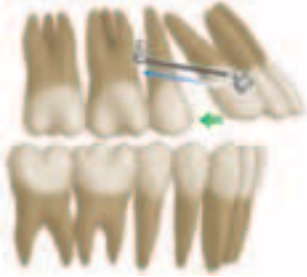
- Finally, connect the *Ancor Pro* Anchor with the orthodontic appliance.

Step 7 - Removing the *Ancor Pro* Anchor

- First remove the connectors to the orthodontic appliance. The *Ancor Pro* Anchor can be removed with the same instruments that were used for insertion.
- The wound does not require any special treatment. It is not essential to administer a local or topical anesthetic.

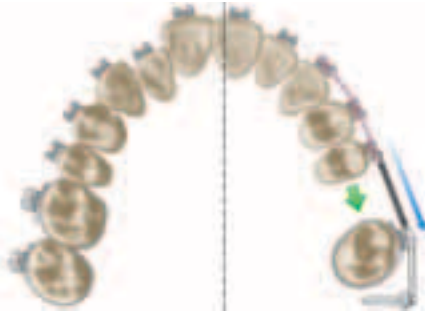


Clinical Cases



Distalization Maxillary

- Following extraction of the upper first bicuspid (premolar).
- Anchors provide the only anchorage.
- In the first stage the cuspid (canine) is uprighted and distalized using traction device.



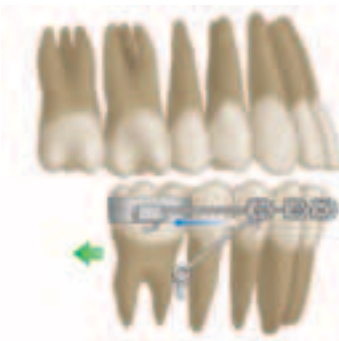
Distalization Maxillary

- Due to loss of the first molar, space is available to shift the midline by distalization of teeth second bicuspid to central incisor, and simultaneously alleviating anterior crowding in the first quadrant.
- An *Ancor Pro* Anchor is used to anchor second bicuspid.



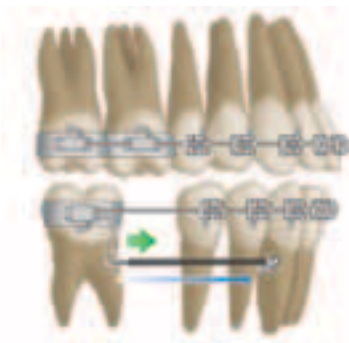
Mesialization Maxillary

- The second molar is moved mesially using a traction device connected directly to an *Ancor Pro* Anchor.
- A transpalatal arch prevents rotation of the tooth and controls mesial movement using first molar.



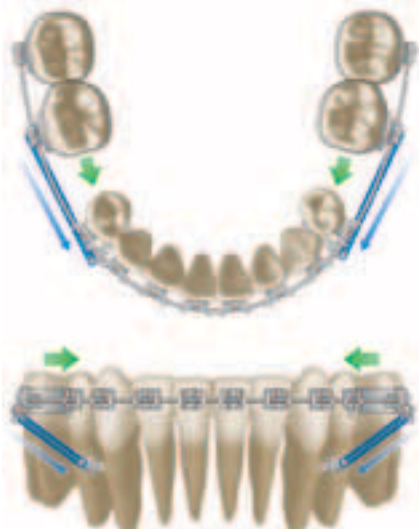
Preprosthetic Treatment Distalization Mandibular

- Loss of the second molar can be compensated for by distalization of the first molar and then applying a prosthetic restoration.
- The first bicuspid is fixed in position with an *Ancor Pro* Anchor.



Mesialization Mandibular

- Mesialization of the second molar, e.g. following extraction of the first molar, is carried out using a traction device directly anchored to an *Ancor Pro* Anchor.



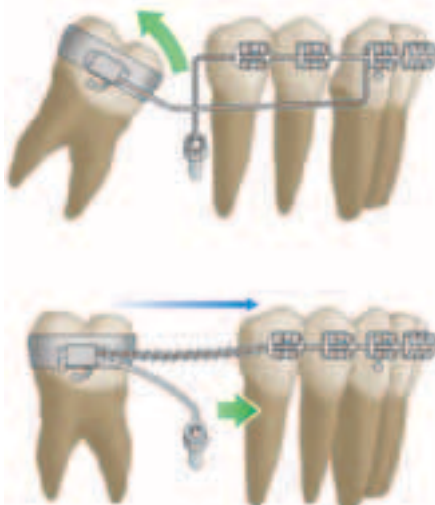
Mesialization Mandibular

- Mesialization of the lower posterior in preparation for surgical correction of a class II.
- *Ancor Pro* Anchors are placed interdentally between cuspids and first bicuspid.



Intrusion Mandibular

- The lower anterior teeth are supra-positioned and are to be intruded.
- The first molars are used as anchorage and fixed in position using *Ancor Pro* Anchors.



Uprighting Mandibular

- Uprighting of second molar.
 - Insertion site: distal of second bicuspid.

Mesialization of Mandibular (Bicuspid)

- Mesialization of the bicuspids for space closure.
 - Insertion site: distal of second bicuspid.

Ancor Pro Kit and Individual Components

Ancor Pro Kit 500-000

An autoclavable, fully loaded storage case that allows for easy storage of all components while not in use. Kit includes: 12 *Ancor Pro* Anchors, 2 Drivers, 1 Latchlock Driver, 1 Thumbwheel, 1 Screwdriver, 1 Drill and 12 X-Ray Placement Guides.



Ancor Pro Anchors

Available in three sizes: 6mm, 8mm, and 10mm. (See details on *Ancor Pro* Anchor diagram)

6mm 500-006
8mm 500-008
10mm 500-010



Drivers

Fit screwdriver, manual handle and ratchet wrench. Available in short-6mm and long-12mm. Have internal retentive features to hold *Ancor Pro* Anchor securely.

Short Driver Insert 500-022
Long Driver Insert 500-023



Latchlock Driver 500-021

Used with standard hand pieces to insert *Ancor Pro* Anchor. Has internal retentive feature to hold *Ancor Pro* Anchor securely. Must be used at a very slow speed (10-20 rpm). Can be used to remove *Ancor Pro* Anchor with motor set in reverse.



Thumbwheel 500-024

Used with long or short Driver insert. Provides good grip to start *Ancor Pro* Anchor in bone.



Screwdriver 500-027

Used with long or short Driver insert. Can be used for insertion, final seating, or removal of *Ancor Pro* Anchor.



Drill 500-020

Used for drilling through soft tissue and cortical bone. Largest diameter is 2.4mm-0.1mm less than collar diameter to ensure snug soft tissue around *Ancor Pro* Anchor.



X-Ray Placement Guide 500-026

Used to mark the *Ancor Pro* Anchor insertion site easily and accurately.



Ratchet (Optional) 500-025

Used with long or short Driver insert. Can be used for insertion or final seating of *Ancor Pro* Anchor. Arrow faces away from patient to insert *Ancor Pro* Anchor. Arrow faces toward patient to remove *Ancor Pro* Anchor.

Accessories to Be Used with the Ancor Pro System

The following products offered through *Ortho Organizers* work flawlessly in conjunction with the *Ancor Pro* Temporary Orthodontic Anchorage System. You will find that these accessories will make the utilization of the *Ancor Pro* System in your practice extremely effective and effortless.



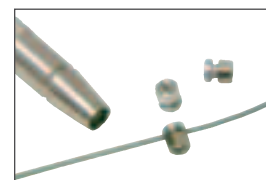
Spooled Dead Soft Ligature Wire 100-417

Dead soft ligature wire is offered in a bright finish and comes in an economical 1 pound spool for doctors who prefer to fabricate their own ligatures. 1 pound spooled ligature wire, .010 in diameter.



Double-Sided Archwire Stop Lock Wrench 430-036

This double-sided wrench was designed specifically to make the application of the archwire stop lock and the archwire stop lock with hook as effortless as possible.



Archwire Stop Lock with Hook

This product is ideal for anchorage, placement of elastics or springs and traction applications. The Double-Sided Archwire Stop Lock Wrench (430-036) can be used to lock in place. (5 per pack)

Rights 430-034
Lefts 430-035



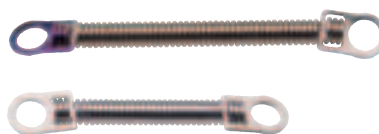
MASEL® Contra-Angle Driver 3400-125

The contra-angle driver is helpful in placing anchors in the posterior, and provides good tactile sensitivity when used with the *MASEL* latchlock driver (500-021).

Elastic Tube 400-025

The elastic tube consolidates space in the entire arch, has good memory and is easy to ligate. This hollow tube is ideal for rotation corrections, cuspid retractions and figure 8's.

Gray .25 Diameter 25' long



Nitanium® Coil Spring Kit

These springs are manufactured from a super-elastic nickel titanium that is designed to open and close spaces with consistent and predictable results. *Nitanium* coil springs have an exclusive perpendicular loop design which is easy to engage and remove.

.010 x .030 – 9mm Closing Springs	100-622
(6 per pack)	
.010 x .030 – 12mm Closing Springs	100-623
(6 per pack)	
.010 x .030 – 9mm Ligature Closing Springs	100-626
(4 per pack)	
.010 x .030 – 12mm Ligature Closing Springs	100-627
(4 per pack)	
.010 x .030 – 15mm Open Coil Springs	100-630
(10 per pack)	
.010 x .036 – 15mm Open Coil Spring	100-631
(10 per pack)	

Elastic Thread 400-038

The elastic thread exerts continuous, long lasting, and predictable force which is ideal for rotations, retractions and figure 8's. This product is made from solid elastomeric material in precision extruded threadform that is moisture, odor and stain resistant.

Gray .25 Diameter 25' long



Accessories to Be Used with the Ancor Pro System *(continued)*



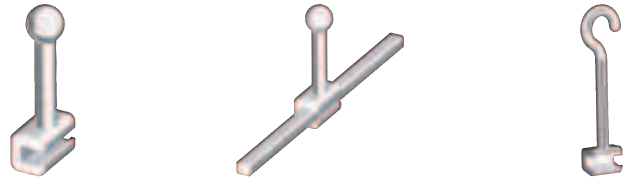
O² Select® Hook Crimping Pliers (Steel) 203-133

These pliers are designed for the placement and securing of ball hooks and power hooks to archwires by placing a crease at the base of the ball hook.



Endura® Hook Crimping Pliers (Straight) 201-435

Designed for placement and the securing of crimpable archwire hooks and power hooks. The product's angled beak allows for precise placement of hook on the archwire.



Crimpable Archwire Hooks

Precision-MIM crimpable hooks are easily crimped onto archwires for precise placement in or outside of the mouth. Crimp tubes create a strong, non-sliding lock with the archwire and remains firmly in place during treatment. Ball hook may be bent for right or left applications, and all hooks fit round or rectangular wire up to .018 x .025.

Crimpable Ball Hook	430-010A
Crimpable Ball Hook (20 per pack)	430-010
Crimpable Archwire Power Hook (Rights)	430-015
Crimpable Archwire Power Hook (Lefts)	430-016

For more information on our products, orthodontic laboratory services and educational offerings, please contact us:
Customer Service: 888.851.0533
In the U.S.: 800.547.2000
Outside the U.S.: +(1) 760 448 8600
Canada: CERUM 800.661.9567
To fax an order: 800.888.7244
To fax an order outside the U.S.: +(1) 760 448 8607
To email an order: USASales@OrthoOrganizers.com
To email an order outside the U.S.: IntlOrders@OrthoOrganizers.com



ORTHO[®]
Organizers

A HENRY SCHEIN® COMPANY

1822 Aston Avenue
Carlsbad, CA 92008
USA
OrthoOrganizers.com