

THE CARRIERE® DISTALIZER™ APPLIANCE  
Shifting the way you think about orthodontics.





# The Carriere Philosophy.

## Fast.

Shortens overall treatment time by up to four months as it treats Class II correction at the beginning of the orthodontic treatment, when there are no competing forces in the mouth caused by brackets or other appliances. A Class II correction can usually be completed in an average of 3-4 months.

## Natural.

Mimicking a human hip ball-socket joint, the *Carriere Distalizer Appliance* allows the first molar to rotate and upright in its natural and correct finishing position, producing a continuous, natural and uniform force for distal molar movement with controlled rotation and tipping correction. Built-in stops engineered in the appliance prevent the molars from over-rotating and the crowns from distal tipping. The *Carriere Distalizer Appliance's* low forces are biologically compatible during the Class II treatment.

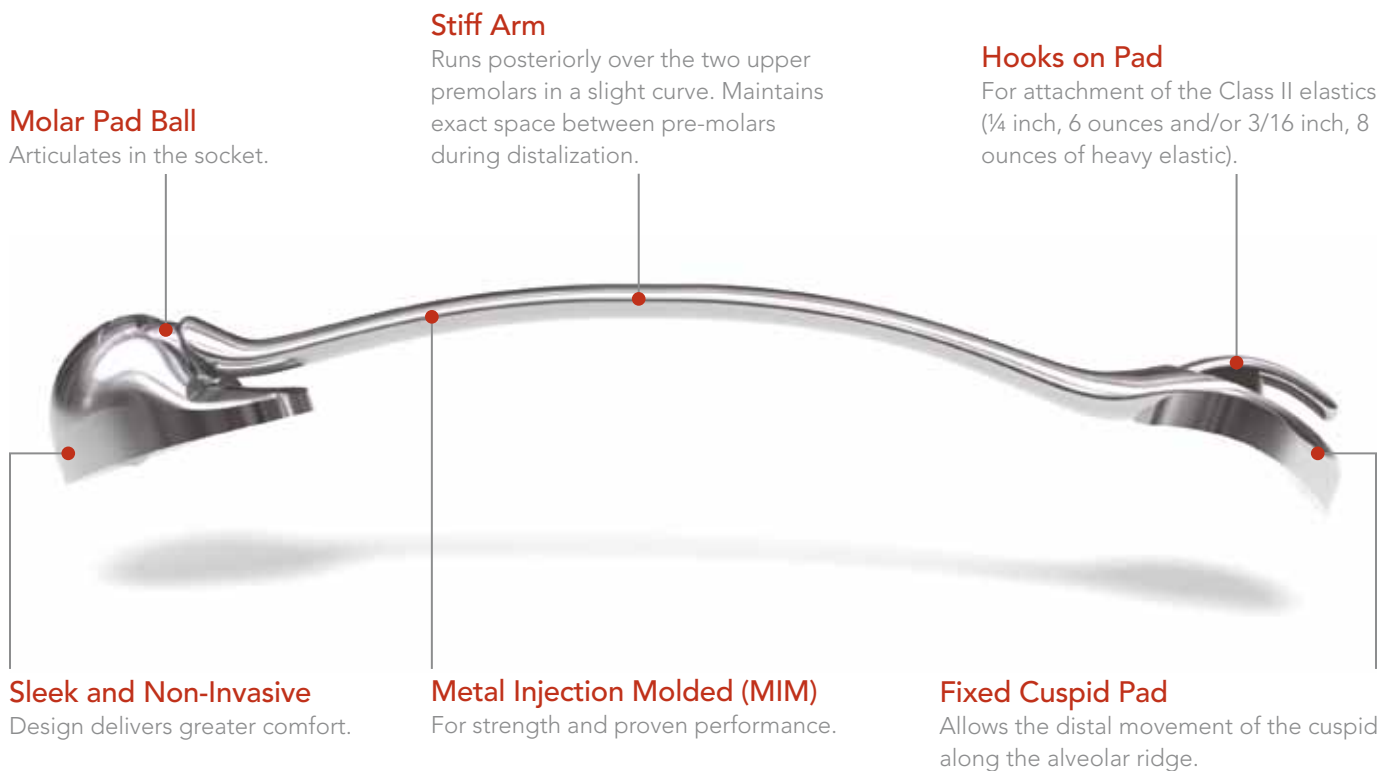
## Gentle.

The low force of the *Carriere Distalizer Appliance* is gentle on your patients, and its low profile design is very comfortable to wear. By treating the Class II platform first, it simplifies the entire treatment for you, and provides greater comfort for your patients.

# The Carriere Distalizer Appliance

## A huge move in the right direction for orthodontics.

To limit extractions and to turn difficult Class II cases into simpler Class I cases is a dream come true for you and your patients. With its sleek, aesthetic and non-invasive design, the *Carriere Distalizer* Class II Correction Appliance provides greater comfort and shortens treatment time by up to four months. Delivering a natural, gentle and uniform force for distal molar movement with controlled rotation and tipping correction before brackets or other appliances are placed, the *Carriere Distalizer* Appliance solves complex problems almost effortlessly.

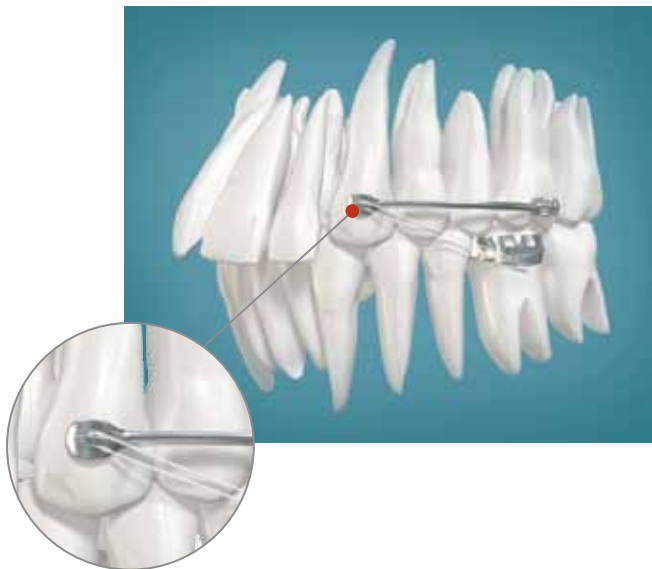


**Loose but Controlled Forces:** The ball and socket joint provides maximum freedom of movement, but also has built-in stops that allow the molars to move directly to their desired position while preventing any unwanted over rotation or tipping.

# Going from Class II to Class I has never been easier.

The *Carriere Distalizer* is a direct bond appliance that attaches to the maxillary canine and first permanent molar, providing a simple procedure for turning complex Class II cases into a Class I platform. Once a Class I condition is achieved, malocclusions become easier to treat and can be finished with your preferred orthodontic technique. Since there are no competing forces in the mouth when using this appliance, average Class II correction can usually be achieved in just three to four months.

- Eliminates wire changes and the distorting collateral forces that appear with every wire activation used in traditional methods.
- Minimizes root resorption.
- Patients are treated faster with less discomfort.
- High level of patient compliance as the appliance is aesthetically pleasing, and used during the initial phase of treatment when patient's motivation is still high.



**Fig. A** | Carriere Distalizer with Class II elastic attached to hook on the cuspid pad. Class I Platform is present when a cuspid occlusion, in which centric relation coincides with centric occlusion, and the molar occlusal relationships are a perfect Class I.

## How it Works.

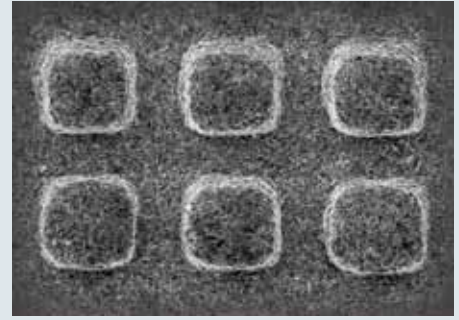
- Corrects the posterior occlusion to an ideal Class I platform first by rotating and uprighting the maxillary first molars while distalizing the posterior segment, from canine or premolar to molars, into a perfect occlusion.
- Simultaneously produces a light, uniform force for distal molar movement.
- Independently moves each posterior segment, from canine or premolar to molar, as a unit.
- Used at the beginning of treatment when there are no competing forces in the mouth allows the distalization of the molars and premolars from 3 to 6mm range, on average.

## Indications.

- Most effective in treating Class II symmetrical and asymmetrical malocclusions without the need for extractions.
- May also be used in many Class I cases with mesially positioned maxillary molars.
- Growing patients are ideal, but adults may be treated as well.
- Mixed dentition Class II cases with fully erupted molars are candidates for Phase 1 treatment to establish a Class I platform.

## Ease of Placement.

The *Carriere Distalizer* Appliance is placed on the maxillary arch, but requires a solid and consistent source of anchorage in the mandibular arch to avoid protrusion of the lower incisors (a lower Essix Appliance with direct bonded tubes on lower molars, a passive lingual arch, a full mandibular fixed appliance, or mini-screws). Once the appliance is bonded, the Class II elastics are attached from the mandibular molar to the hook of the maxillary cuspid of the *Carriere Distalizer* to activate.



**Fig. B** | The Carriere with the LX Difference: Micro-etched surface for increased bond strength.

## The Movement Created by the Carriere Distalizer.

Bodily distalizes the maxillary posterior segments as a block while correcting upper first molar rotation and uprighting. The posterior portion of the *Carriere Distalizer* Appliance accomplishes three types of molar movement:

1. Uprighting of the crown, if it is mesially inclined (*Fig. 01*). Once the molar has been uprighted, the articulation of the ball with the socket prevents distal tipping.
2. Distal rotation around the palatal root. When the maxillary first molar is mesially rotated around the palatal root, the molar occlusion may appear to be Class II, while in reality it is Class I with the canines in a cusp-to-cusp relationship (*Fig. 02*). When the molar has been de-rotated, the shoulder of the posterior base contacts the mesial arm to prevent over-rotation.
3. Distal displacement without concurrent distal tipping of the crown.



**Fig. 01** | Provides controlled molar rotation and uprighting.



**Fig. 02** | The maxillary molars are distalized and rotated, providing a platform for maxillary canines to occlude in a Class I relationship.



**Fig. 03** | With mesially rotated molars, cusps cannot occlude in Class I relationship.



**Fig. 04** | Independently moves each posterior segment, from canine or premolar to molar, as a unit.

To learn more,  
call us at 888.851.0533.

## Class II Correction with Clear Aligner Systems.

The *Carriere Distalizer* Appliance may be used with patients who want to be treated with clear aligners, but display a Class II malocclusion. This allows practitioners to treat more patients requesting clear aligners without limitations. Now complex Class II malocclusion cases can be “jump started” with the *Carriere Distalizer* Appliance and finished with a clear aligner system.

### The Carriere Distalizer Appliance

Description / Size	Item Numbers LEFT & RIGHT (1SET)		
KITS			
<i>Carriere Distalizer</i> Standard Kit (1 set of each 23, 25, 27mm)	424-900C		
<i>Carriere Distalizer</i> Master Kit (1 set of each 16, 18, 20, 23, 25, 27mm)	424-901C		
Description / Size	Item Numbers LEFT	Item Numbers RIGHT	Item Numbers LEFT & RIGHT (1SET)
FIRST BICUSPID TO FIRST MOLAR*			
<i>Carriere Distalizer</i> 12mm	424-912L	424-912R	424-912C
<i>Carriere Distalizer</i> 13mm	424-913L	424-913R	424-913C
<i>Carriere Distalizer</i> 14mm	424-914L	424-914R	424-914C
<i>Carriere Distalizer</i> 15mm	424-915L	424-915R	424-915C
<i>Carriere Distalizer</i> 16mm	424-916L	424-916R	424-916C
<i>Carriere Distalizer</i> 17mm	424-917L	424-917R	424-917C
<i>Carriere Distalizer</i> 18mm	424-918L	424-918R	424-918C
<i>Carriere Distalizer</i> 19mm	424-919L	424-919R	424-919C
<i>Carriere Distalizer</i> 20mm	424-920L	424-920R	424-920C
<i>Carriere Distalizer</i> 21mm	424-921L	424-921R	424-921C

## The Carriere Distalizer Appliance

Description / Size	Item Numbers LEFT	Item Numbers RIGHT	Item Numbers LEFT & RIGHT (1SET)
<b>CUSPID TO FIRST MOLAR*</b>			
Carriere Distalizer 22mm	424-922L	424-922R	424-922C
Carriere Distalizer 23mm	424-923L	424-923R	424-923C
Carriere Distalizer 24mm	424-924L	424-924R	424-924C
Carriere Distalizer 25mm	424-925L	424-925R	424-925C
Carriere Distalizer 26mm	424-926L	424-926R	424-926C
Carriere Distalizer 27mm	424-927L	424-927R	424-927C
Carriere Distalizer 28mm	424-928L	424-928R	424-928C
Carriere Distalizer 29mm	424-929L	424-929R	424-929C
Carriere Distalizer 30mm	424-930L	424-930R	424-930C
Carriere Distalizer 31mm	424-931L	424-931R	424-931C
Carriere Distalizer 32mm	424-932L	424-932R	424-932C
Carriere Distalizer 33mm	424-933L	424-933R	424-933C
Carriere Distalizer 34mm	424-934L	424-934R	424-934C

Description / Size	Item Numbers
<b>ACCESSORIES</b>	
Typodont-26mm Distalizer/Ling Arc	631-017D
Carriere Distalizer Elastics - Force 1 (50 packs of 100 elastics)	424-9F1**
Carriere Distalizer Elastics - Force 2 (50 packs of 100 elastics)	424-9F2**
Carriere Distalizer Storage Tray 1/pk	CDATRAY
Fixed Lingual Contour Arch Appliance for Lower Anchorage Kit (5 of each size)	032-060
Fixed Lingual Contour Arch Appliance for Lower Anchorage, Size 1	032-061
Fixed Lingual Contour Arch Appliance for Lower Anchorage, Size 2	032-062
Fixed Lingual Contour Arch Appliance for Lower Anchorage, Size 3	032-063
Fixed Lingual Contour Arch Appliance for Lower Anchorage, Size 4	032-064

\*"First Bicuspid to First Molar" and "Cuspid to Molar " descriptions are an estimated guide of use. The size distalizer and span of teeth are dependent upon the age and size of each patient. \*\*Call for availability.

# The Carriere® Self-Ligating Bracket System.

Also available for use with the *Carriere Distalizer* Appliance is the *Carriere* Self-Ligating Bracket. The bracket is one of the lowest profile and fastest growing self-ligating brackets on the market today. It is specifically designed to meet your goal of low-friction and low-force by providing greater control in the bracket archwire interface through ultra light forces. In addition, the *Carriere* Self-Ligating Bracket with the LX difference will provide you with the following:



- Micro-etched surface for increased bond strength.
- Lowest profile and less bulk in comparison to Damon 2 and 3™ and In-Ovation-R®, with smooth labial surface of the locking mechanism, enhancing patient comfort.
- Color-coded brackets for easier identification.
- Simple locking mechanism that opens with a Wire Director and Opener Tool, facilitating easier archwire placement and assisting with opening and closing of the gate.

For more information on our products and educational offerings, please contact us:

In the U.S. 888.851.0533 | Outside the U.S. +(1) 760 448 8600 | Canada: CERUM 800.661.9567

To fax an order: 800.888.7244 | To email an order: [USASales@OrthoOrganizers.com](mailto:USASales@OrthoOrganizers.com)

[CarriereSystem.com](http://CarriereSystem.com)

© 2010 Ortho Organizers, Inc. All rights reserved. PN 999-242 Rev. 03/10. U.S. Patent No. 7,621,743 and foreign patents. Damon 2, Damon 3, and In-Ovation-R are the property of their respective owners.

 **CARRIERE®**