



# Nitanium Palatal Expander<sup>2</sup><sup>™</sup>

Multi-Purpose Finishing Appliance

The easy to use *Nitanium Palatal Expander*<sup>2</sup> takes expansion a step beyond

**This extraordinary expansion appliance has the capacity to Rotate, Upright, Distalize and Expand anterior and posterior arch with gentle biocompatible force.**

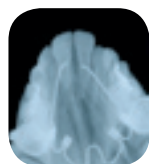
The *Nitanium Palatal Expander*<sup>2</sup> Appliance's action is the result of transition temperature and shape memory. Warmth within the patient's mouth activates movement in the thermal nickel titanium energy wire toward the appliance's pre-programmed shape. This produces the desired expansion in unison with tooth movement. Once the exact correction is achieved, the appliance stops expanding and lies passive.

- Slower expansion has shown to lower incidents of relapse\*
- Thermally-activated *Nitanium*<sup>®</sup> for total control eliminating patient's compliance
- Ease of placement and removal by the doctor
- Orthology arms and loops provide adjustability for fine-tuning and finishing
- No laboratory work is required – available in 10 sizes

## Case Study – Patient #96807 Seven Month Progress



3-15-96



4-12-96



6-17-96



8-19-96



10-30-96

Ask for Your Free Copy of these Articles on the *Nitanium Palatal Expander*<sup>2</sup> Appliance:

"Slow Maxillary Expansion with Nickel Titanium" By Drs. Ravi Nanda and Robert Marzban • 999-162

\*"Slow and Continuous Maxillary Expansion, Molar Rotation and Molar Distalization" By Dr. Maurice Corbett • 999-151

## Nitanium Palatal Expander<sup>2</sup> Appliance

### Individual Expanders \*, \*\* (1 per pack)

26mm Expander	•	101-761
28mm Expander	•	101-762
30mm Expander	•	101-763
32mm Expander	•	101-764
34mm Expander	•	101-765
36mm Expander	•	101-766
38mm Expander	•	101-767
40mm Expander	•	101-768
42mm Expander	•	101-769
44mm Expander	•	101-770

\* For easy identification, each expander has size numbers permanently stamped on the assembly.

\*\* Expanders are for single-use only.

## Nitanium Palatal Expander<sup>2</sup> Appliance Full Range Kit • 101-760

1 expander of each of the following 10 sizes:  
26mm, 28mm, 30mm, 32mm, 34mm,  
36mm, 38mm, 40mm, 42mm and 44mm  
1 can of OrthoFreez (10 oz.)  
1 acrylic storage holder  
Instruction manual

## Nitanium Palatal Expander<sup>2</sup> Appliance Mid-Range Kit • 101-760M

1 expander of each of the following 5 sizes:  
32mm, 34mm, 36mm, 38mm and 40mm  
1 can of OrthoFreez (10 oz.)  
1 acrylic storage holder  
Instruction manual

## Individual Components

OrthoFreez (10 oz. can) • 100-788  
Expander Adjustment Plier • 200-450

## Auxiliary Products

The **Nitanium Palatal Expander<sup>2</sup>** Appliance simply slips into any of the following weldable Lingual Sheaths.



### 971-032

.036 slotted, horizontal,  
latching indent.  
Fits left or right.  
(10 per pack)



### UR/LL • 971-034 UL/LR • 971-035

.036 slotted, horizontal,  
latching indent hook.  
(10 per pack)



### UR/LL • 971-036 UL/LR • 971-037

.036 horizontal hook,  
slotted, latching indent.  
(10 per pack)



### UR/LL • 971-038 UL/LR • 971-039

.036 vertical hooks.  
(10 per pack)

Individual band kits are available with a welded Lingual Sheath and Buccal Tube.

For more information on our products and educational offerings, please contact us:

In the U.S.: 800.547.2000

Outside the U.S.: +1.760.448.8600

Canada: CERUM. 800.661.9567

To fax an order: 800.888.7244

To email an order: [UsaSales@OrthoOrganizers.com](mailto:UsaSales@OrthoOrganizers.com)



**ORTHO**<sup>™</sup>  
Organizers

1822 Aston Avenue  
Carlsbad, CA 92008  
USA

[www.OrthoOrganizers.com](http://www.OrthoOrganizers.com)