



Patient Education

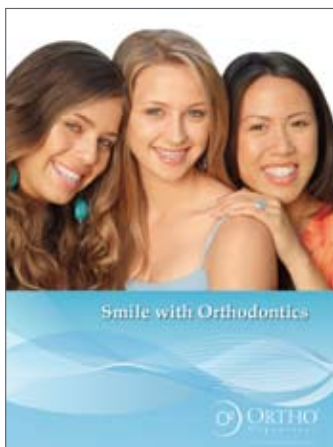
Helping Explain Orthodontics

As a full solution provider, *Ortho Organizers*® knows how important it is to inform your patients on the full range of services you provide. Whether you have been practicing orthodontics for years, or have recently integrated orthodontics into your practice, educating your patients is vital to maximizing revenue. We are pleased to offer you a variety of products to help market your services, and better explain the process of orthodontic treatment to your patients. Among the items we offer are:

- Orthodontic Patient Kits (PN 660-101), customized for your practice (PN 660-102)
- A Healthy Smile with Orthodontics Patient Education Brochure (PN 999-179)
- 3 Girls Orthodontic Poster (PN 999-223)
- A Healthy Smile with Orthodontics Poster (PN 999-232)
- Elastomerics Color Chart (PN 999-503)
- *Smile Safari*™ Elastics Chart (available for free on **OrthoOrganizers.com**)
- *Carriere LX*® Self-Ligating Bracket 15x Demo Model (PN 631-017CLX)
- Typodonts – a wide range of models for use as visual aids in patient education:
 - Clear Articulated Typodont (PN 631-000)
 - Pink Epoxy Typodont with Case (PN 621-001)
 - Teeth Models (PN 631-020)
 - Study Model with Case – Class I (PN 631-022)
 - Intraoral Device Typodonts
 - Stone Model with *Nitanium*® *Palatal Expander*²™ Appliance (PN 631-008)
 - *Multi Distalizing Arch*™ System (PN 631-009)
 - *Twin Force*® Bite Corrector Device, Standard (PN 631-023)
 - *Twin Force* Bite Corrector Device, Double Lock (PN 631-024)
 - *Ancor Pro*® Temporary Orthodontic Anchorage System (PN 631-005)



Smile Safari Elastics Chart



3 Girls Orthodontic Poster (PN 999-223)



Pink Epoxy Typodont with Case (PN 621-001)

Bracketed Typodonts

- Rooted Teeth – *Elite*® *Medium-Twin*™ Brackets 7x7 (PN 631-007)
- *Carriere LX* Self-Ligating Brackets 5x5 (PN 631-017)
- *Elite Mini-Twin*® Brackets 7x7 (PN 631-011)
- *Elite Medium-Twin* Brackets 5x5 (PN 631-012)
- *Elite Mini-Twin* Vertical Slot Brackets 5x5 (PN 631-013)
- *Illusion Plus*™ Ceramic Brackets 5x5 (PN 631-014)
- *Envision*™ Composite Brackets 5x5 (PN 631-015)
- Mini-Alexander Brackets 5x5 (PN 631-016)
- *Di-MIM*® Brackets 7x7 (PN 631-018DM)
- *Opti-MIM*® RP Brackets 5x5 (PN 631-018RP)
- *Coralex*® Vertical Slot Brackets 5x5 (PN 631-018C)
- *Delta Force*® Brackets 7x7 (PN 631-018DF)
- *NeoLucent*™ Ceramic Brackets 5x5 (PN 631-027)
- *Opti-MIM* Mini-Edgewise Brackets 5x5 (PN 631-018EW)

- *Opti-MIM* LP Brackets 5x5 (PN 631-018LP)
- Nanda Prescription *Opti-MIM* Brackets 7x7 (PN 631-018RN)
- *Mini-Twin* Vertical Slot Brackets 5x5 (PN 631-018VS)
- *Illusion Plus* Brackets Upper/*Elite* Brackets Lower 7x7 (PN 631-019)

Articulator, Wax Forms, Epoxy Teeth

- Articulator (PN 631-030)
- Epoxy Teeth (PN 631-032)
- Ideal Occlusion Wax Form (PN 631-035)
- Class I Wax Form (PN 631-036)
- Class II, Div. I Wax Form (PN 631-037)
- Class II, Div. II Wax Form (PN 631-038)
- Class III Wax Form (PN 631-039)
- Epoxy Teeth with Brackets and Buccal Tubes (*Opti-MIM* Brackets 7x7) (PN 631-044)

Call today for more information on any of our patient education products, and ask about a free poster!
Contact us at **888.851.0533**, or email us at **USASales@OrthoOrganizers.com**. Or, for more information please visit our Web site at **OrthoOrganizers.com**.



Nanda Prescription *Opti-MIM* Brackets 7x7
(PN 631-018RN)



Articulator (PN 631-030)
Epoxy Teeth (PN 631-032)
Ideal Occlusion Wax Form (PN 631-035)

For more information on our products, orthodontic laboratory services and educational offerings, please contact us:

Customer Service: 888.851.0533

In the U.S.: 800.547.2000

Outside the U.S.: +1.760.448.8600

Canada: CERUM 800.661.9567

To fax an order: 800.888.7244

To fax an order outside the U.S.: +1.760.471.9549

To email an order: USASales@OrthoOrganizers.com



ORTHO[®]
Organizers

A HENRY SCHEIN® COMPANY

1822 Aston Avenue
Carlsbad, CA 92008
USA
OrthoOrganizers.com