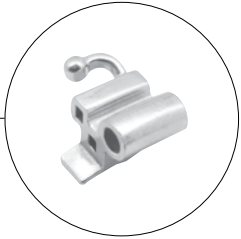


Bands Buccal Tubes Lingual Attachments

When only the best will do.



Bands

Ortho Organizers, Inc.[®] offers a complete selection of bands to fulfill your every request. Each band has the option to be ordered as plain or as a pre-welded assembly. For the ultimate in custom fitting, shape and retention choose from *Epic™* Molar Bands or *Tempra™* Molar Bands. They both offer:

- Precise occlusal and gingival fit to avoid cement washout
- Anatomically shaped for a secure fit and superior retention
- Accurate and consistent size graduation for an exact fit
- Permanent I.D. marks on mesial side for easy identification
- Trimmed occlusal and gingival area for minimal interference
- Available with micro-etched interior for maximum retention
- Thinner straight interproximal for reduced separation
- High quality Stainless Steel withstands additional pressure of extraoral and intraoral appliances

Epic Bands

When the right fit is important, do not settle for anything less than the *Epic* Molar Band. Its superior tooth design adapts easily to the anatomical contour of the tooth. Made of regular tempered material, the *Epic* Molar Band is extremely malleable allowing it to easily recontour. It is available in whole sizes; 3 through 36.



Tempra Bands

Made of full tempered material, the *Tempra* Molar Band offers great elasticity and a superior fit. In addition, the band has increased occlusal edge strength which prevents deformation. The *Tempra* Molar Band is available in half sizes; 29½ through 44.

Bicuspid Bands

Made of full tempered material, the bicuspid bands are anatomically fit for left or right, and available in whole sizes; 1 through 24 for the maxilla, and 3 through 26 for the mandible.



Primary Molar Bands

The narrow occlusal-gingival height allows the general purpose primary molar band to easily fit primary molars. Molar bands are available in the Starter Kit, pre-welded or plain as an individual band. They are anatomically fit for left or right, and available in half sizes; 25 through 30 ½.



Elite® Non-Convertible Buccal Tubes

Elite Non-Convertible Buccal Tubes are available pre-welded, plain or direct bond.

Their low profile design, along with no tie-wings and a smooth surface allow for reduced interference and increased patient comfort. For added convenience the first molar gingival ball hooks hold elastics and springs securely.



Upper First Molar Non-Convertible
Standard Buccal Tube



Lower First Molar Non-Convertible
Standard Buccal Tube



Upper First Molar Non-Convertible
Buccal Tube with Gingival Facebow Tube



Lower First Molar Non-Convertible
Lip Bumper Tube



Upper First Molar Non-Convertible
Double Buccal Tube



Lower First Molar Non-Convertible
Double Buccal Tube



Upper First Molar Non-Convertible
Triple Buccal Tube



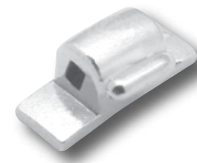
Upper Second Molar Mini Molar Tube
(with Distal Extension)



Lower Second Molar Mini Molar Tube
(with Distal Extension)



Upper Second Molar Mini Molar Tube
(without Distal Extension)



Lower Second Molar Mini Molar Tube
(without Distal Extension)

Non-Convertible Elite Opti-MIM® Direct Bond Molar Buccal Tubes

Non-Convertible *Elite Opti-MIM* Direct Bond Buccal Tubes are one-piece and comprised of *Nickel-Lite*®² Material. They offer an anatomical *Grip-LOK*® Micro-Etched Base for precise fit and improved bond strength.



Upper First Molar Non-Convertible
Standard Buccal Tube



Upper First Molar Non-Convertible
Mini Buccal Tube



Lower First Molar Non-Convertible
Standard Buccal Tube



Lower First Molar Non-Convertible
Mini Buccal Tube

Better Bonding with the Micro-Etched Grip-LOK® Mesh Base

Testing proves that our patented Mesh Base Design is superior to foil mesh.

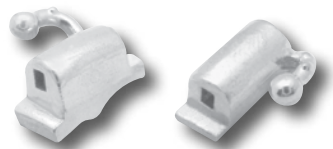
Micro-etching each *Opti-MIM* Base improves bond strength and greatly reduces bond failures.



Electron Microscope scan
of the *Elite Opti-MIM*
Grip-LOK Base

First & Second Molar Non-Convertible *Elite Opti-MIM* Micro Buccal Tube

First and Second Molar Non-Convertible *Elite Opti-MIM* Micro Buccal Tubes have shorter flanges allowing the buccal tube a more precise interface with the tooth. It also features a defined buccal indent which assists with accurate placement and enhanced stability.



First & Second Molar Non-Convertible Solo Tube

A one-piece, one cusp molar tube that is about half the length of a traditional buccal tube and is designed to be bonded to the mesial cusp of the first and second molar. Compound contouring and *Grip-LOK* Micro-Etched Base create a stable fit for placement and stability.



Band Auxiliaries

Lingual Attachments

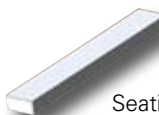
These lingual attachments can be welded to create band assemblies.



Lingual Button (flat)



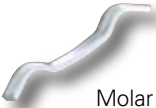
Cuspid/Bicuspid
Lingual Cleat



Seating Lugs

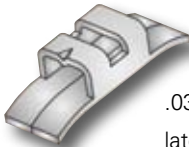


Lingual Button (curved)

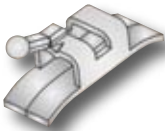


Molar Cleat

Lingual Sheaths



.036 slotted, horizontal,
latching indent, fits left or right



.036 slotted, horizontal,
latching indent, horizontal hook



.036 slotted, horizontal,
latching indent hook



.036 slotted, horizontal,
latching indent, vertical hook

For Direct Bond Lingual Attachments, contact a customer service representative at 800.547.2000 or visit our web site at www.OrthoOrganizers.com.

For more information on our products and
educational offerings, please contact us:
In the U.S.: 800.547.2000
Outside the U.S.: +1.760.448.8600
Canada: CERUM. 800.661.9567
To fax an order: 800.888.7244
To email an order: UsaSales@OrthoOrganizers.com



1822 Aston Avenue
Carlsbad, CA 92008
USA
www.OrthoOrganizers.com